



ASKING PRICE

£775,000

Danvers Road

Crouch End, N8 7HH

PROPERTY SUMMARY

Set on a tranquil tree-lined road is this spacious, split-level, maisonette. Accessed via own front door and entering the hallway on the ground floor moving into generous reception and separate dining area. The ground floor is completed by separate kitchen leading onto spacious private rear garden. The first floor provides the two double bedrooms and three-piece bathroom suite.

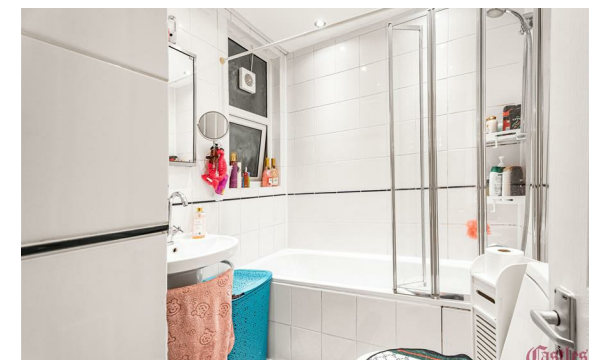
Set at the foot of Alexandra Palace providing a haven for dog lovers and an afternoon stroll through the green open spaces of Alexandra Park. Ideally located equidistant to both Muswell Hill and Crouch End Broadways providing a vast array of independent retailers and eateries.

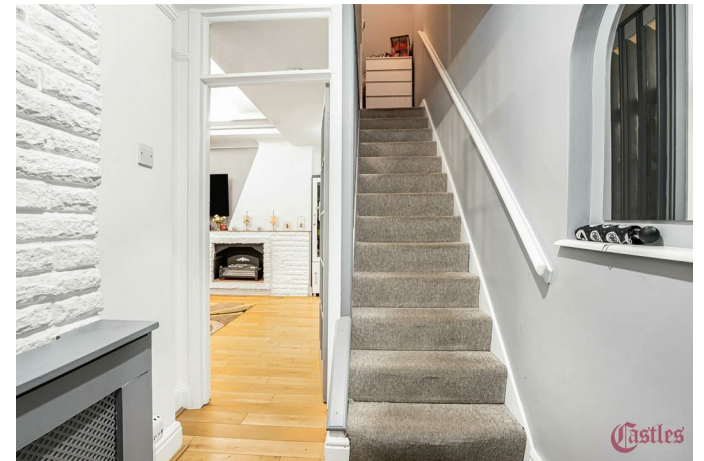
The property will be offered on a chain free basis.

Lease: 125 years from 29/9/2002 (Expiry 29/9/2127)

Current Service/Maintenance Charge: £360.00 per annum

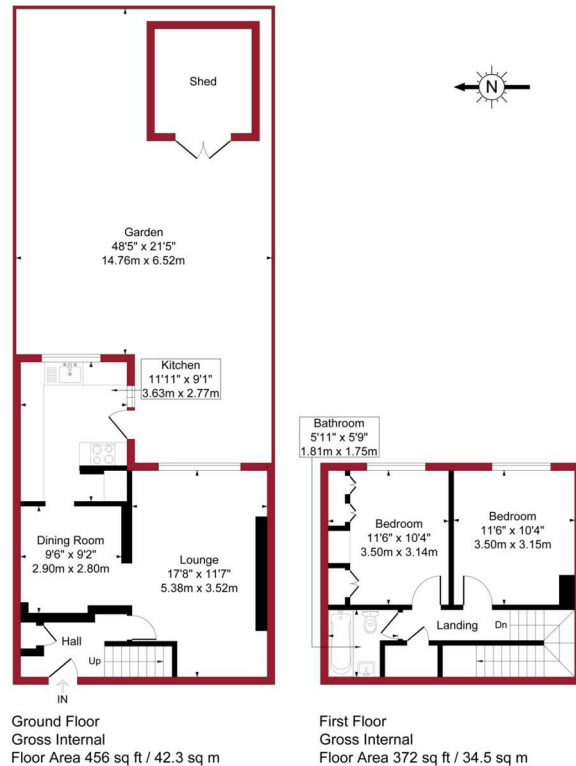
Ground Rent: £150.00 per annum





Danvers Road, London, N8

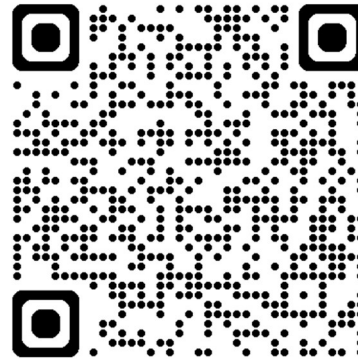
Approximate Gross Internal Area = 828 sq ft / 76.8 sq m



Floor plan produced in accordance with RICS Property Measurement 2nd Edition. Although Pink Plan Ltd ensures the highest level of accuracy, measurements of doors, windows and rooms are approximate and no responsibility is taken for error, omission or misstatement. These plans are for representation purposes only and no guarantee is given on the total square footage of the property within this plan. The figure icon is for initial guidance only and should not be relied on as a basis of valuation.



For a guide to the area
please scan this code for
more information



Maisonette

Leasehold

Council: Haringey

Council Tax Band: C

Agents Note: Whilst every care has been taken to prepare these particulars, they are for guidance purposes only. All measurements are approximate and are for general guidance purposes only and whilst every care has been taken to ensure their accuracy, they should not be relied upon and potential buyers/tenants are advised to recheck the measurements



OFFICE ADDRESS

12 Topsfield Parade
Crouch End
London
N8 8PR

OFFICE DETAILS

020 8348 5515
crouchend@castles.london
<https://www.castles.london>

